



**HIPROM**  
TECHNOLOGIES

**Americas & Asia**

Tyrox Automation  
24 Twain St, Irvine, CA 92617  
Tel. +1 (949) 509 9347  
Fax +1 (949) 509 9348  
Email tech@hiprom.com

**Europe, Africa & Middle East**

Hiprom Technologies  
Tel. +27 11 787 - 4458  
Fax +27 11 787 - 7937  
Email tech@hiprom.com  
Web http://www.hiprom.com

Automation Fair 2009

# Profibus-PA Integration

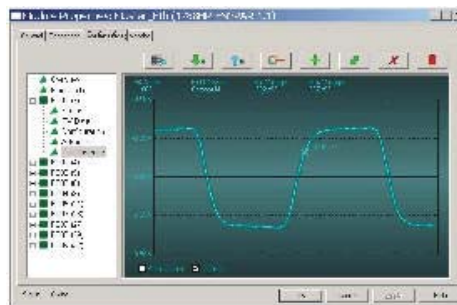
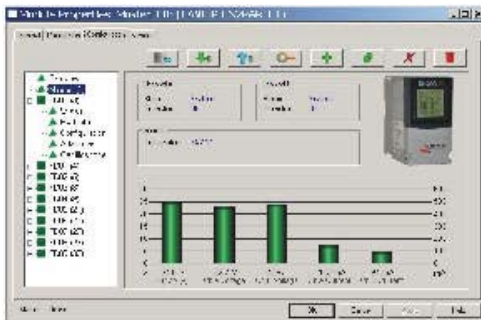
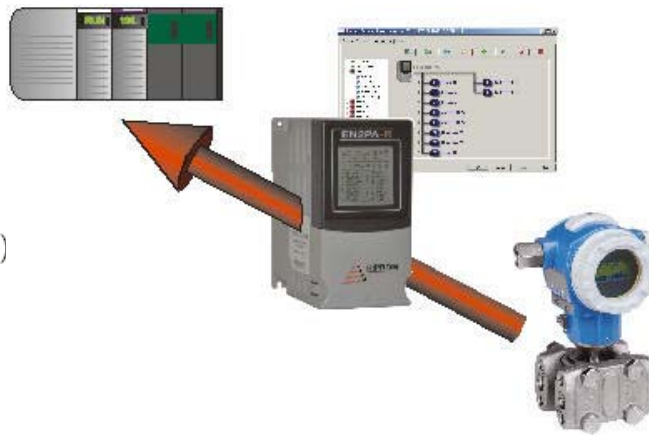


## 1788HP-CN2PA-R 1788HP-EN2PA-R

The EN2PA-R and CN2PA-R provide a fast and integrated solution for adding Profibus PA field devices to any Logix platform. These linking devices provide a direct link between Profibus PA and EtherNet/IP or ControlNet (Redundant), with no intermediate Profibus-DP layer required.

Integration into RSLogix5000 is seamless when making use of the modules' Add-On-Profiles (AOPs), and the process variables of each field device appear in engineering units without any required user logic. All Profibus PA configuration is done within the RSLogix5000 environment. Additional PV statuses and diagnostic information is also available.

- Direct Logix to Profibus PA
- No Profibus DP required
- Dual Port Ethernet Embedded Switch
- Ethernet DLR - Device Level Ring
- Redundant PA Media (Dual Trunk / Ring)
- Auto default configuration.
- Supports FDT / DTM technology.
- Advanced diagnostics (oscilloscope)
- Web Interface.



# 1788HP-PARJB

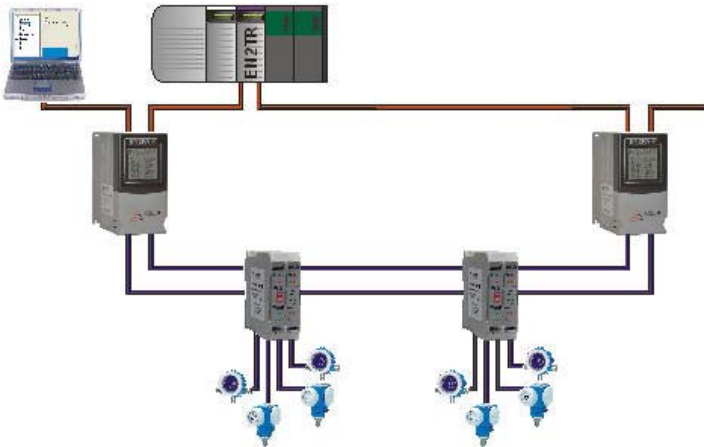
FDT/DTM technology is supported allowing direct access to the field devices diagnostics and parameters using an FDT frame such as FTAssetCentre. In addition to this, a field device DTM can be launched from within the RSLogix5000 environment using Hiprom's FDT-ThinFrame technology. FDT-ThinFrame also allows a device DTM to be launched from within the FTViewSE HMI, allowing the operator a graphical view into the state and diagnostics of the field device.



Both the EN2PA-R and CN2PA-R make use of EtherNet/IP embedded switch technology supporting Linear Network and Device Level Ring (DLR) topologies. In the CN2PA-R, the DTM (Class 2) information can be retrieved via either ControlNet or EtherNet/IP. The latter allowing the segregation of control and asset management data.

The linking devices are true Profibus PA masters, and no additional coupler or power conditioners are required. When used with Hiprom's intelligent PA Junction Boxes (PARJB), redundant Profibus PA media can be used. The PARJB protects the network from both short and open circuit faults, improving the overall reliability of the system. The system can also be configured for multi-master operation.

Commissioning is simplified by onboard advanced diagnostics, including a node specific PA bus oscilloscope trace which can be viewed within the RSLogix5000 AOP.



# TIME Synchronization

## 1756HP-TIME 1769HP-TIME

The 1756HP-TIME and 1769HP-TIME modules contain an onboard GPS receiver leveraging the accuracy of the GPS satellite atomic clocks. Both modules hosts dual Ethernet ports for direct Ethernet time synchronization using NTP (Network Time Protocol) and PTP (Precision Time Protocol) where the modules act as a Time Grandmasters.

NTP can be used to synchronize HMI PCs without the need for any additional software. PTP is recommended for the control layer where a precision of 250ns with respect to UTC (Universal Coordinate Time) can be achieved in certain network topologies.

The modules feature EtherNet/IP Embedded Switch Technologies allowing Linear Network and Device Level Ring Ethernet topologies. For legacy systems modulated IRIG-B (input or output) is supported. All GPS data including position, velocity and status information is also available.





### 1756HP-TIME

open all | close all

- Main
  - Home
  - Diagnostics
    - Overview
    - Network settings
    - 1588 PTP (Time Sync)
    - Eventlog
    - Debug
  - Statistics
    - Ethernet
    - GPS
    - PTP / NTP

HOME	
Device Name	1756HP-TIME
Device Description	PTP and NTP time master
Ethernet MAC Address	00:80:35:0B:00:30
IP Address	196.135.145.235
Hardware Revision	MB Rev 2 B20 : DB Rev 0 B20
Firmware Revision	Rev 1.01
Serial Number	350B0030
Status	Online
Uptime	0 days 7h 9m 14s

Copyright © 2009 Hiprom Technologies, Inc. All Rights Reserved.

- Internal GPS Receiver
- PTP - Precision Time Proto
- NTP - Network Time Protoc
- IRIG-B Input / Output
- Dual Port Ethernet Switch
- DLR - Device Level Ring
- Web Interface

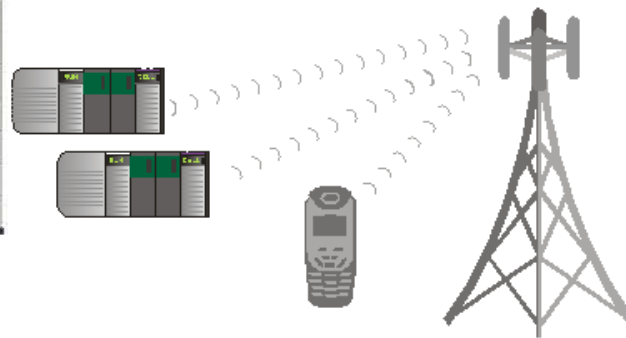
# CELLULAR Communication

## 1756HP-CELL



The 1756HP-CELL module is a ControlLogix GSM cellular communication module supporting SMS (Short Message Service, also referred to Text Messaging), GPRS (General Radio Packet Service) and 3G data services.

Data transfer between Logix controllers can make use of these services allowing monitoring and control of remote stations without the need for costly radio infrastructure. The SMS facility can also be used for notifying responsible personnel of critical alarm information. Because the module is also able to receive SMSs, pre-configured users may also use SMS to request production report information directly from the Logix CPU from anywhere in the world.



# BIOMETRIC Security

## 1788HP-IDENT



Bring the security of biometric identification into your Logix controller with the 1788HP-IDENT module.

This EtherNet/IP device provides a method of authenticating a user for a number of applications including access control, HMI logon etc.

User and fingerprint databases are maintained in the Logix controller, and although the fingerprint processing takes place in the device, the authentication takes place in the Logix controller. This allows users the flexibility to engineer a wide range of applications.